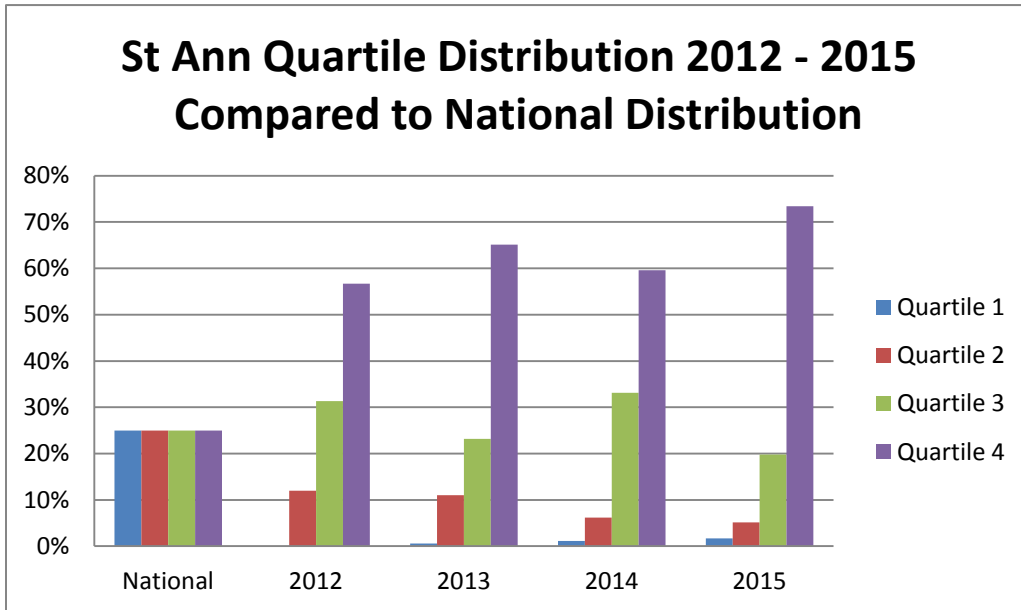
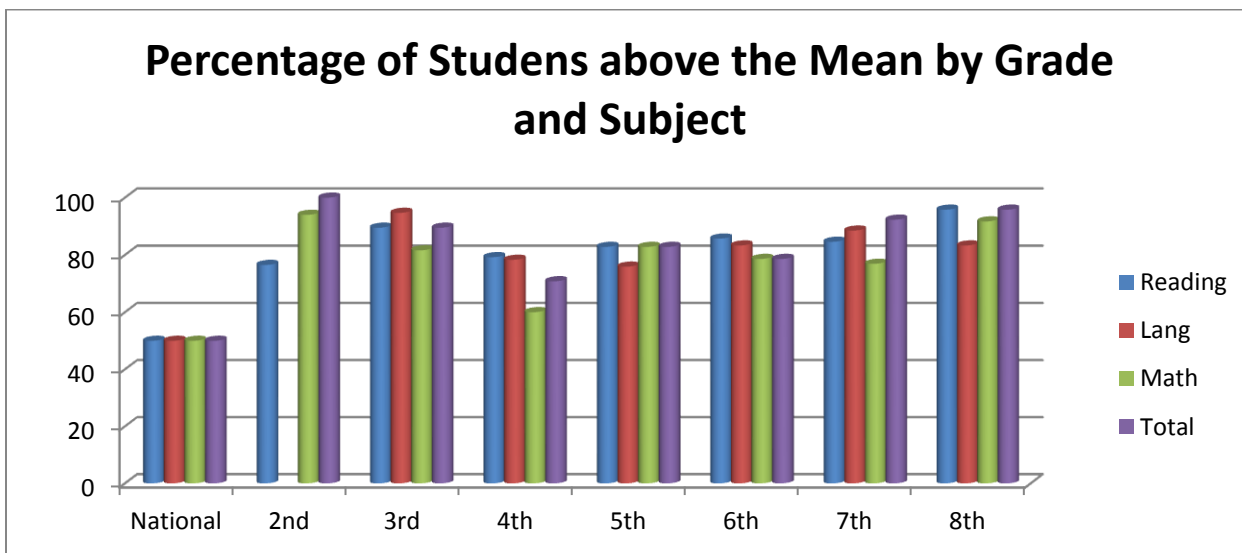


The following graph shows the distribution of quartile results for the years 2012, 2013, 2014 and 2015 compared to the national distribution which remains at a constant 25% per quartile each year.



It is notable that for the last four years the vast majority of our students – 87.5% to over 93% - have scored above the national average.

The following graph compares the percentage of students at Saint. Ann The following graph compares the percentage of students at St. Ann School who scored above the National Percentile of the Mean Normal Curve Equivalent average of 50%. In schools across the country 50% of students score above the 50% level. In each grade and on every test our students scored well above that level.



To help you understand how well your student scored in comparison to others in his class, the following chart with grade level using the MNCE (Mean Normal Curve Equivalent) has been constructed for the Saint Ann School population. It shows National Percentile of the Mean National Curve Scores (NPMNCE). Using the Mean Normal Curve Equivalent –MNCE-- and the National Percentile of the MNCE allows us to compare our scores to other national

normed test scores. Since new reporting techniques are able to provide us with the same types of information that was formerly only available for the normal population, please note that this chart does include students with special needs for the first time. The first column on the left contains the grade level. Each test area has two columns below it. The first is the MNCE or the average score on that test for your child's class at Saint Ann School. Comparing your child's score to the median number for reading, language, math, science and social studies will give you a better insight into your student's achievement in relation to other students on the same grade level at Saint Ann's. The second column shows where Saint Ann ranks as a National Percentile based on the Mean Normal Curve Equivalent. The NPMNCE has a median score of 50%. **Our students have scored above the national average on every grade level for every subject area of the NPMNCE.**

Grade	READING		ELA		LANGUAGE		MATH	
	MNCE	NPMNCE	MNCE	NPMNCE	MNCE	NPMNCE	MNCE	NPMNCE
2	61.4	71%	NA	NA	NA	NA	72.1	
3	70.3	83%	73.1	83%	70.7	84%	67.1	
4	61.3	70%	58.0	65%	62.0	72%	57.1	
5	74.5	88%	67.1	79%	62.9	73%	74.7	
6	68.9	82%	67.7	88%	65.6	77%	64.8	
7	68.8	81%	75.0	88%	74.0	87%	66.2	
8	77.6	90%	76.3	89%	71.7	85%	71.5	

Grade	SCIENCE		SOC. ST.		TOTAL	
	MNCE	NPMNCE	MNCE	MNCE	MNCE	NPMNCE
2	67.1	79%	69.3	82%	67.9	80%
3	66.6	78%	69.4	82%	73.8	87%
4	58.0	65%	66.2	78%	60.4	69%
5	75.6	89%	71.5	85%	71.9	85%
6	63.8	74%	58.0	65%	69.0	82%
7	57.3	64%	64.1	75%	74.5	88%
8	61.3	70%	68.8	81%	77.1	90%

These tests are used to recognize current student performance and mastery of skills as well as to identify areas that need improvement and evaluate the development of content and skills within the curriculum.